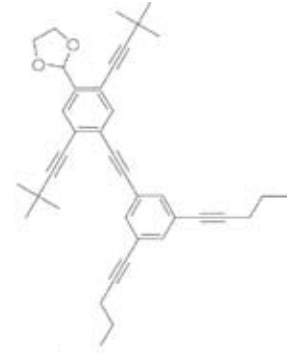


PRESS RELEASE



FOS

ANOTHER PLACE YET A PLACE

March 13th – May 2nd 2010

OPENING: March 12th, from 6 pm

Andersen's Contemporary BERLIN is proud to announce *Another Place Yet a Place*, the first solo show at the gallery by Danish artist FOS. The exhibition explores the transition of knowledge from a pre-lingual, sensuous or intuitive place into a system organized through language and rational thought. This transition is characterized by repetitive information which, when encountering the apparatus of human perception, almost compels a physical shape. The transition is a membrane, a process, a 'clutch'. The title *Another Place Yet a Place* thus points to FOS' by now well known practice 'Social Design'; a type of construction method for building a space or place with the aim of raising awareness of perception and social processes between people. To put it into FOS' words: 'I see the world as constituted of layers, only a small part of it visible to us and existing as a reaction of what lies underneath; 3D is a shadow of 4D'.

Another Place Yet a Place leads on from FOS' solo show *Memory Theatre Twig* at GAK in Bremen in 2008 and his recent solo show *Clutch* at Max Wigram in London. In Bremen, the exhibition was focused on the idea of the "cabinet of curiosities" as a symbol of the systematic organization of knowledge. In *Clutch* and in *Another Place Yet a Place*, FOS takes a "step back" from the concepts structuring the show in Bremen and introduces us to a space where information is yet to be collected. It is in the process of being discovered and organized.

The tent in the gallery is the physical link between *Another Place Yet a Place*, and *Memory, Theatre, Twig!* The GAK Bremen show was structured around semi-transparent, colored tents that served as platforms for the materialization and organization of objects and memory. In the *Clutch* show one of these tents had been re-designed to fit the space and brought into a new context. And here in *Another Place Yet a Place* this investigation continuous in new sculptural works, a poster and a video projection.

FOS' overall practice investigates how physical space achieves significance through social interaction and how the aesthetics of this social space can challenge and transform social constructs. Referring to his approach as *Social Design*, the artist does not try to create models but rather to suggest solutions through the investigation of the physicality of social relations. His artistic approach is based on the question: when we live in an aestheticized society, where does the artist place his aesthetics?

FOS (Thomas Poulsen) (b. 1971, Copenhagen, DK) lives and works in Copenhagen. This year he has had a solo exhibition at Max Wigram Gallery, London. In 2008, he had a solo show at GAK, Bremen, and was included in a group show at The San Carlos Museum, Mexico. In 2007 he had a solo presentation at Art Basel 38 Statements with Max Wigram Gallery. In 2006 his work was shown in exhibitions in Denmark and internationally including the Busan Biennial (Korea); *Social Design* at Badischer Kunstverein (Germany); *Everything but the Sink*, Kunstverein Göttingen, Eigenheim (Germany) and *Regarding Denmark*, Ileana Tounta Contemporary Art Centre, Athens (Greece).

FOS: *Another Place Yet a Place* is Andersen's final show in Berlin. The Copenhagen venue has recently moved to new amazing facilities, and the gallery will continue its exhibitions from this location. The Copenhagen gallery inauguration show is a solo show with Tomas Saraceno, opening with a party on March 26th 2010.

For further information and press images please contact the gallery.

ANDERSEN'S CONTEMPORARY
Invalidenstr. 50/51
D-10557 Berlin
Office: +49 30 302 087 60
Fax: +49 30 302 087 61
www.andersen-s.de
info@andersen-s.de